

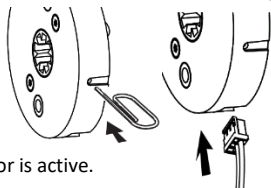
Before you begin

This programming procedure will work on all types of Somfy RTS motors, providing the motor is in the factory default state (i.e. the motor has been reset or the blind has been supplied with the motor unprogrammed).

Somfy Li-ion Motors (motor with internal battery)

If you have a Somfy Li-ion motor, ensure it is awake before starting the pairing process:
Briefly press the motor head button or connect the charger.

The blind will jog indicating the motor is active.



Somfy 12Vdc Powered Motors

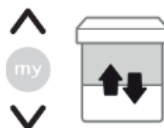
If you have a Somfy 12Vdc motor powered by an external power supply (battery pack, solar pack, mains adapter), ensure the power supply is connected before starting the pairing process.

Initiate the pairing process

- 1 If using a Somfy multi-channel control, ensure the desired channel is selected prior to pairing.

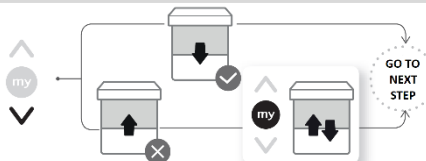


BRIEFLY PRESS & RELEASE the Up & Down buttons on the control:
The motor will jog briefly.

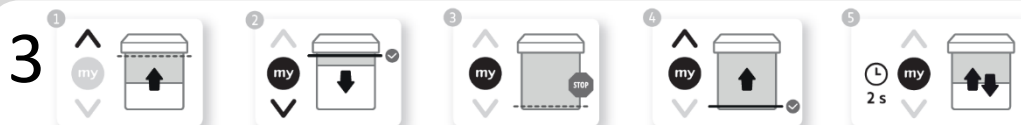


Checking/correcting the blind direction

- 2 **BRIEFLY PRESS & RELEASE** the Down button on the control.
If the blind operates down, the direction is correct – go to the next step.
If the blind operates up, **PRESS & HOLD** the 'my' button until the blind jogs to reverse the direction.



Recording the upper & lower stop positions



1. Use the control to adjust the blind to the upper stop position.
2. **BRIEFLY PRESS & RELEASE** the 'my' & Down buttons on the control – the blind will operate down.
3. **BRIEFLY PRESS** the 'my' button once the blind reaches the lower stop position.
Fine tune to the exact lower stop position if required with the Up & Down buttons.
4. **BRIEFLY PRESS & RELEASE** the 'my' & Up buttons on the control – the blind will operate up and stop at the upper stop position previously set.
5. Record the stopping positions by **PRESSING & HOLDING** the 'my' button until the blind jogs.

Pairing the control & completing the programming process

- 4 **BRIEFLY PRESS & RELEASE** the program button on the control – the blind will jog. The programming process is complete and the blind motor is programmed.

The blind will now operate with a brief press of the Up or Down buttons and automatically stop at the preset stop positions.

