

Before you begin

If you are programming multiple blinds, we recommend you disconnect the power to all other blinds in signal range. Ensure the blind you are programming has the power supply connected to the motor.

If using a Somfy multi-channel control, ensure the desired channel is selected prior to starting the programming process.

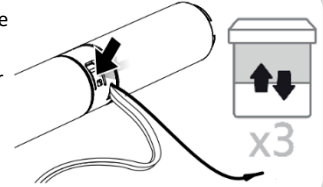


Motor reset

The motor is located inside the headrail - the reset button is located under the white flap next to where the supply cable and aerial exit the motor.

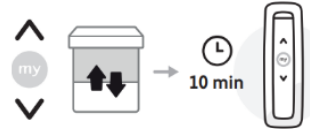
1 PRESS & HOLD the reset button (push the end of the white flap) on the motor until the blind jogs three times.

Don't release the button until the motor has completed the cycle of three separate jogs (*the motor should jog after: 2-3 secs, 4-5 secs & 10secs*).



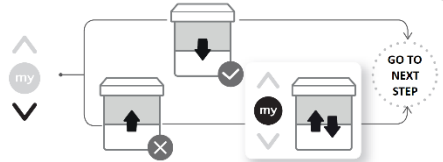
Start the programming process

2 Start the programming process by **BRIEFLY PRESSING** the control Up & Down buttons together - the blind will briefly jog. The control is now temporarily paired to the motor and you have 10 mins to complete the programming process.

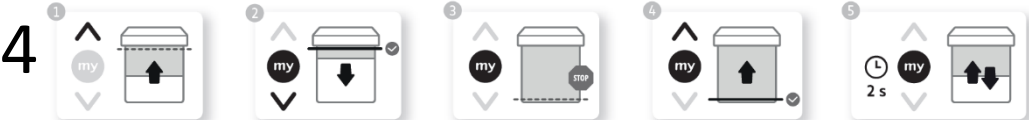


Checking/correcting the blind direction

3 **BRIEFLY PRESS & RELEASE** the Down button on the control. If the blind operates down, the direction is correct – go to the next step. If the blind operates up, **PRESS & HOLD** the 'my' button until the blind jogs to reverse the direction.



Recording the upper & lower stop positions



1. Use the control to adjust the blind to the upper stop position.
2. **BRIEFLY PRESS & RELEASE** the 'my' & Down buttons on the control – the blind will operate down.
3. **BRIEFLY PRESS** the 'my' button once the blind reaches the lower stop position.
Fine tune to the exact lower stop position if required with the Up & Down buttons.
4. **BRIEFLY PRESS & RELEASE** the 'my' & Up buttons on the control – the blind will operate up and stop at the upper stop position previously set.
5. Record the stopping positions by **PRESSING & HOLDING** the 'my' button until the blind jogs.

Pairing the control & completing the programming process

BRIEFLY PRESS & RELEASE the program button on the control – the blind will jog. The programming process is complete and the blind motor is programmed.

5 The blind will now operate with a brief press of the Up or Down buttons and automatically stop at the preset stop positions.

